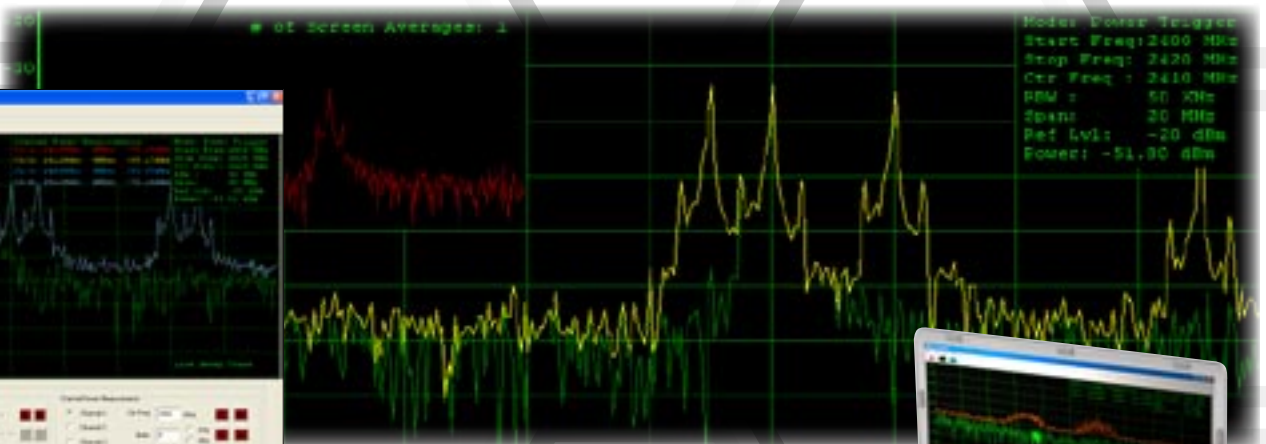


NECTAR™



RF Spectrum Analysis Software On Your PC

Nectar™ is a Windows® XP software application that scans and monitors a variety of wireless networks. **Nectar™** utilizes the **BumbleBee™** Receiver Module to continuously scan **BumbleBee™** frequency bands **900 MHz, 2.4 GHz and 5 GHz, 2.4, 4.9 and 5 GHz** or (**BumbleBee Wi-MAX frequencies**). Users must specify the desired RF frequency models when ordering. Current **BumbleBee™** customers may use their receivers with the **Pollenator™** PC interface with **Nectar™** software. User selectable channel, preset and log settings ensure that **Nectar™** software is able to distinguish your network's signal strength from other networks and sources of RF interference. Laptop or PC control via USB and ethernet creates customized, time-stamped log files for true 24/7 monitoring. In addition, JPEG/BMP snapshot features allow users to instant capture waveforms at key moments for later analysis. **Nectar™** software features up to 5 distinct waveform traces (1 live and 4 peak), screen averaging, video smoothing and packet/interference triggering.



Use BumbleBee™ hardware on your desktop or laptop for spectrum analysis monitoring 24/7.

- ✓ Full Spectrum Analysis using BumbleBee™ calibrated receiver technology
- ✓ Channel Power Measurements (up to 4 user selectable channels)
- ✓ Adjacent Channel Power Measurements
- ✓ Presets for different frequency bands
- ✓ Choose Between 3 Different Models: (900 MHz, 2.4 & 5 GHz) (2.4, 4.9 & 5 GHz) (BumbleBee Wi-MAX frequencies)
- ✓ Interfaces to BumbleBee receiver via USB & Ethernet (using Pollenator™)
- ✓ Power Trigger Modes (with measurement delay)
- ✓ 5 Waveform Traces (1 live & 4 peak traces)
- ✓ Screen Averaging (up to 100 traces)
- ✓ Video Smoothing (VBW : 50 kHz)
- ✓ JPEG/BMP Snapshots of the screen



Use your BumbleBee™ receiver and Pollenator™ to interface with your PC via the USB or Ethernet port.

Call us today for more information:
(732) 548-3737 / Fax: (732) 548-3404
www.bvsystems.com
info@bvsystems.com

Windows and Dell are registered © trademarks of the Microsoft and Dell Corporations respectively.





RF Spectrum Analysis Software On Your PC

Frequency:
Ranges: 902-928 MHz ISM Band
2400 – 2500 MHz ISM Band (802.11/802.11b/g standard)
4940 – 4990 MHz (Public Safety Band) *only available in public safety model
5150 – 5500 MHz U-NII (802.11a standard)
5500 – 5900 MHz U-NII (802.11a standard)

Span: 50 kHz to 800 MHz
Resolution bandwidth: 50 kHz – 1 MHz (50, 100, 300, 500, 1 MHz)
Automatic 802.11 preset bandwidths
Video bandwidth (smoothing): 100 kHz – 1 MHz (50 kHz steps)
Screen Averaging: 1 – 100 Averages
Reference Stability: ± 2.5 PPM
Sweep Time: 800 mSec (20 MHz span, 50 kHz resolution bandwidth)

Amplitude:
Average Noise Floor (No input): < -100 dBm (reference level -70 dBm)
Dynamic Range: > 40 dB
Level Accuracy: ± 1.5 dB (25 deg. C)
Max input (safe): + 0 dBm
Max input (no saturation) - 20 dB
Reference level: -20 to -70 dBm (10 dB steps)

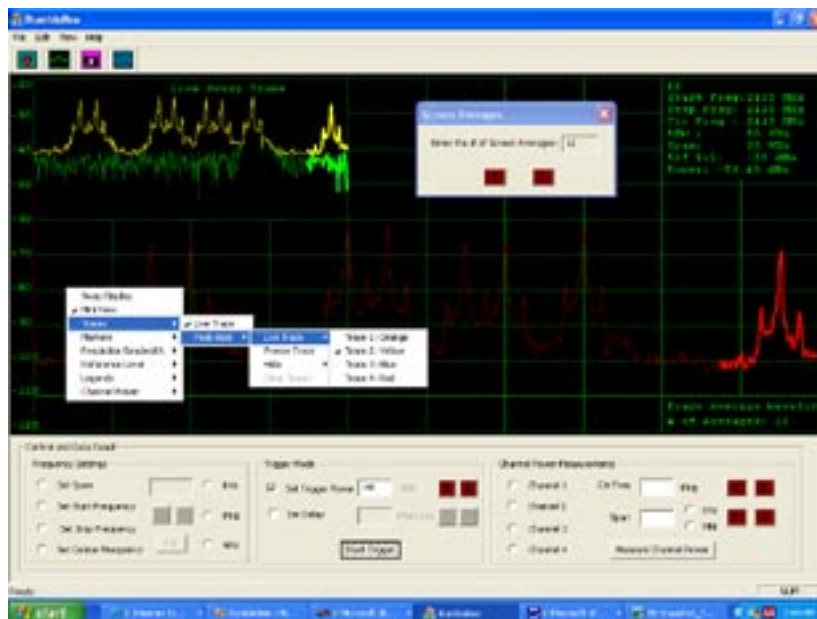
Display/Operating System/Memory:
Number of traces: 3 colors
Trace settings: Peak hold, screen average
Marker functions: Peak search, center frequency, left, right, delta
Screen shots saved to .jpg/.bmp file
Operating system: Windows XP (Service Pack 2)

Triggering:
Auto or Manual: Trigger analyzer when input power meets or exceeds threshold (20 MHz span)
Packet/Interference Trigger: user settable in dBm.
Trigger threshold: user settable in mS.
Trigger delay:

Input Connector: SMA Female, 50Ω

Accessories:
900 MHz Antenna
2400 MHz Antenna
5 GHz Antenna

Optional Accessories:
12V Car Adapter
900 MHz Yagi Antenna
2.4 GHz Directional Antenna
5 GHz Directional Antenna
5 Watt dB attenuator pad



Call us today for more information:
(732) 548-3737 / Fax: (732) 548-3404
www.bvsystems.com
info@bvsystems.com