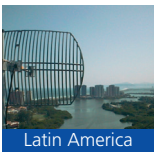
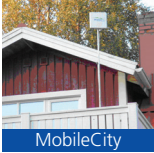


MobileCity, Sweden

The First WiMAX-Ready Network in Scandinavia



Many remote areas of Scandinavia do not have access to modern telecommunications services and residents live too far from one another to offer an attractive business model for operators to extend their wireline networks to them.

About MobileCity

- Established in 2001, MobileCity is a consortium of commercial and academic organisations dedicated to the research, testing and development of wireless communications. It is located near a town called Skellefteå which is used as a showcase for new and emerging wireless technologies

The Challenge

- To provide wireless coverage over a wider area than is possible with the existing WiFi network
- To provide broadband to villages and leisure facilities surrounding the city of Skellefteå where the existing wired infrastructure is old and would be expensive to replace

The Solution

- A broadband wireless network built using BreezeMAX, Alvarion's WiMAX-ready platform

The Result

- The first WiMAX-ready network in Scandinavia
- Sweden's first municipality to install wireless broadband throughout its entire area, enabling villages and other settlements outside the town to have broadband connections
- A model to provide internet access and last-mile connectivity services to both large and small communities throughout the world

www.mobilecity.nu/index.html

As a result, in 2001 MobileCity, a consortium of commercial and academic organisations, was established to research, test and develop wireless technologies.

Due to its proximity to MobileCity, the town of Skellefteå in Northern Sweden has been used as both a test-bed and showcase for new wireless technologies. Consequently, by the start of 2004, the town had around 80 WiFi hotspots enabling people to connect to the internet in cafes, hotels and shops – as well as the airport. But even with such a large number of hotspots it was not possible to provide broadband to all businesses and homes in Skellefteå.

Frustrated by the limited reach of the WiFi network the researchers at MobileCity were keen to provide access in areas outside the city including the local golf course, several shopping centers, sporting facilities and campsites as well as a number of villages where existing wired infrastructure could not support broadband. They started to investigate their options.

BreezeMAX from Alvarion

MobileCity's research soon showed that WiMAX would be the most cost-effective way to extend top-quality broadband coverage throughout the region. Providing coverage over a distance of 20 kilometres, compared to WiFi technology which has a range of only a few hundred meters, WiMAX looked promising.

So MobileCity decided to team up with industry leaders Intel, Alvarion and UpGrade Communication AB, a local value added distributor of broadband infrastructure products, to build a network using BreezeMAX, Alvarion's WiMAX-ready platform.

Customer type: Municipality

Country / Region: Sweden, Western Europe

Solution: BreezeMAX™, Alvarion's WiMAX-ready platform

Application: Data services for homes and businesses



“We have proved that WiMAX works not only in test labs but in a real world environment. Cities throughout Scandinavia and Europe, especially those in remote areas underserved by wireline infrastructure, can immediately benefit from WiMAX. This is the next step in Internet connectivity, and a business opportunity for cities and companies in general and for ISPs in particular.”

Goran Eriksson,
CEO of
MobileCity,
Sweden

BreezeMAX is Alvarion's third-generation OFDM platform with superb non-line-of-sight (NLOS) capabilities. It enables operators to build economically compelling broadband networks and is designed for widespread deployment of broadband wireless by both small and large carriers to serve residential, corporate, MDU/MTU, hotspot, backhaul, and wireless home networking applications.

The initial release of the WiMAX platform, BreezeMAX 3500, operates in the 3.5GHz frequency band. By using BreezeMAX in the 3.5GHz spectrum, MobileCity can now:

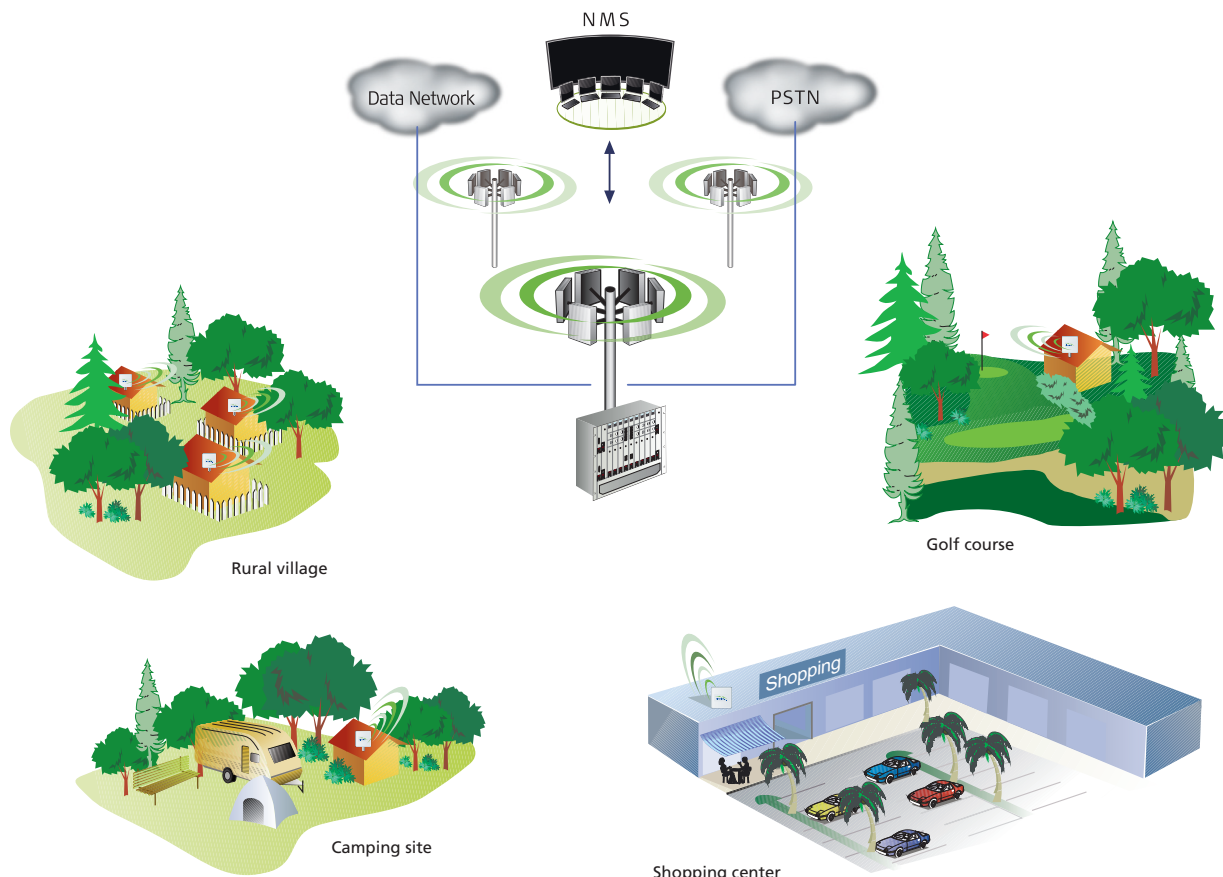
- Reach more customers with fewer base stations
- Serve customers situated in NLOS areas
- Provide high quality of service (QoS) for voice and data applications
- Offer speeds of up to 10Mbps

In October 2004 WiMAX trials started in three rural villages north of Skellefteå. MobileCity estimates that the investment for WiMAX will be paid for by subscription charges paid by Skellefteå 71,000 inhabitants.

When MobileCity was set up one of its objectives was to be able to provide an out-of-the box wireless broadband solution that can be used in any municipality around the world. This system has to be robust enough to weather the climate of Sweden, cost effective in its initial investment and operating costs and available 24/7. Thanks to WiMAX and Alvarion, MobileCity has found the answer.

The Future

MobileCity is an ambitious organisation and plans to help municipalities throughout Scandinavia to rollout WiMAX networks.



International Corporate Headquarters
Tel: +972 3 645 6262, Fax: +972 3 645 6222
Email: corporate-sales@alvarion.com

© Copyright 2005 Alvarion Ltd. All rights reserved.
Alvarion® and all product and service names referenced here in are either registered trademarks, trademarks, tradenames or service marks of Alvarion Ltd.
All other names are or may be the trademarks of their respective owners. The content herein is subject to change without further notice.



www.alvarion.com